

APEX ARC™ STEM ANTERIOR APPROACH



Charles E. Bryant, M.D. Oklahoma City, Ok

WHY ANTERIOR APPROACH?

- “MUSCLE SPARING” / FASTER RECOVERY?
- STABILITY / “PRECAUTIONS”
- SCIATIC NERVE
- LEG LENGTHS
- MARKETING?

WHY NOT ANTERIOR APPROACH?

- TIME—LEARNING / SURGERY
- MORE DIFFICULT?
- CHANGE
- NO BETTER?
- INSTRUMENTS
- OR TABLE

LEARNING AIDS ANTERIOR APPROACH

- SEMINARS / CADAVERS
- SITE VISITS
- READING / INTERNET
- VIDEOS

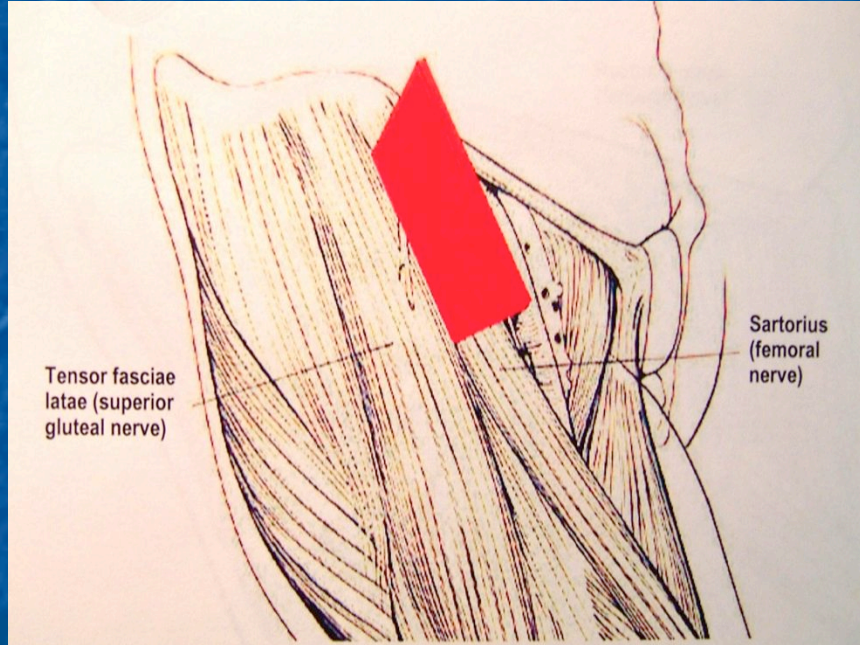
VIDEOS

- AAOS
- VUMEDI.COM
- ORLIVE.COM
- YOUTUBE

"DIRECT" ANTERIOR APPROACH

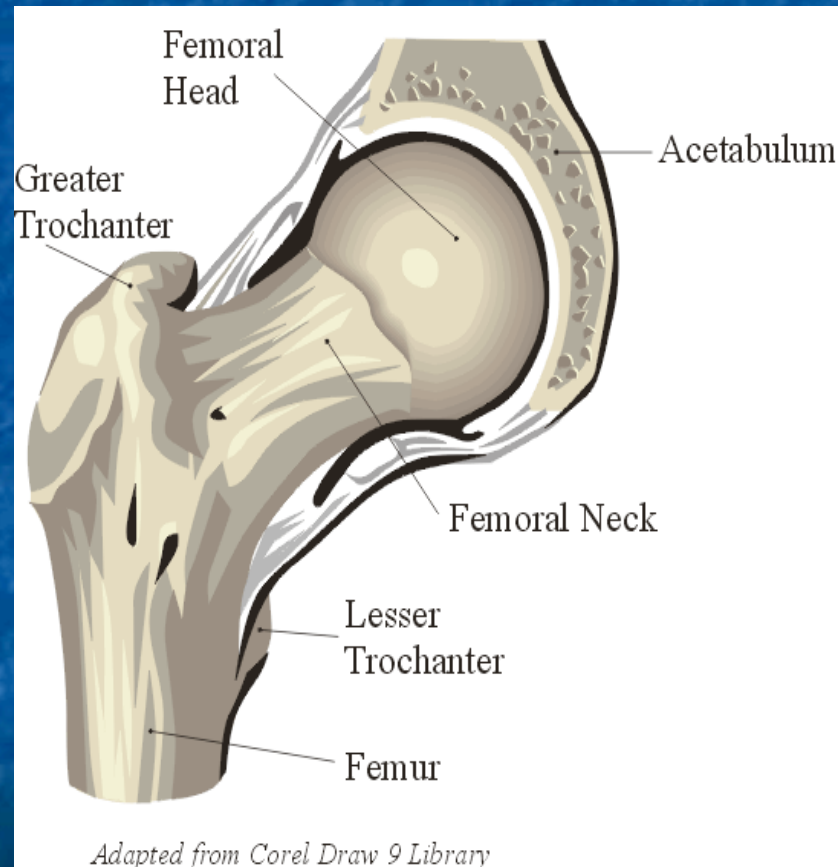
- KEGGI
- MATTA
- BEREND (ASI)
- Szuszczewicz

"DIRECT" ANTERIOR APPROACH



- "Modified Smith-Peterson"
- "Internervous and Intermuscular"

CAPSULAR RELEASE



“ANTERIOR APPROACH”

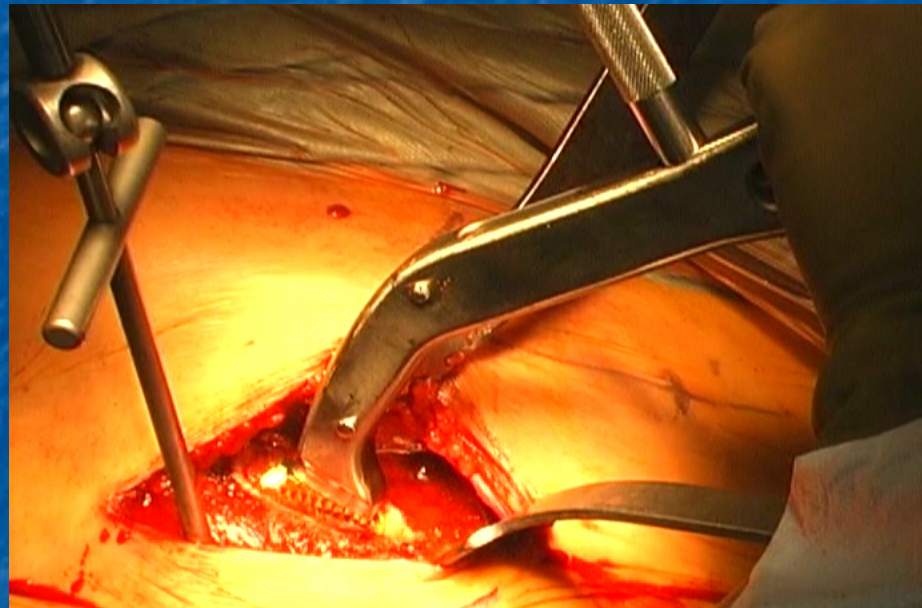
- WATSON-JONES
- ALMI (anterolateral minimal invasive)
- HARDINGE (anterolateral)



ARCH TABLE EXTENSION

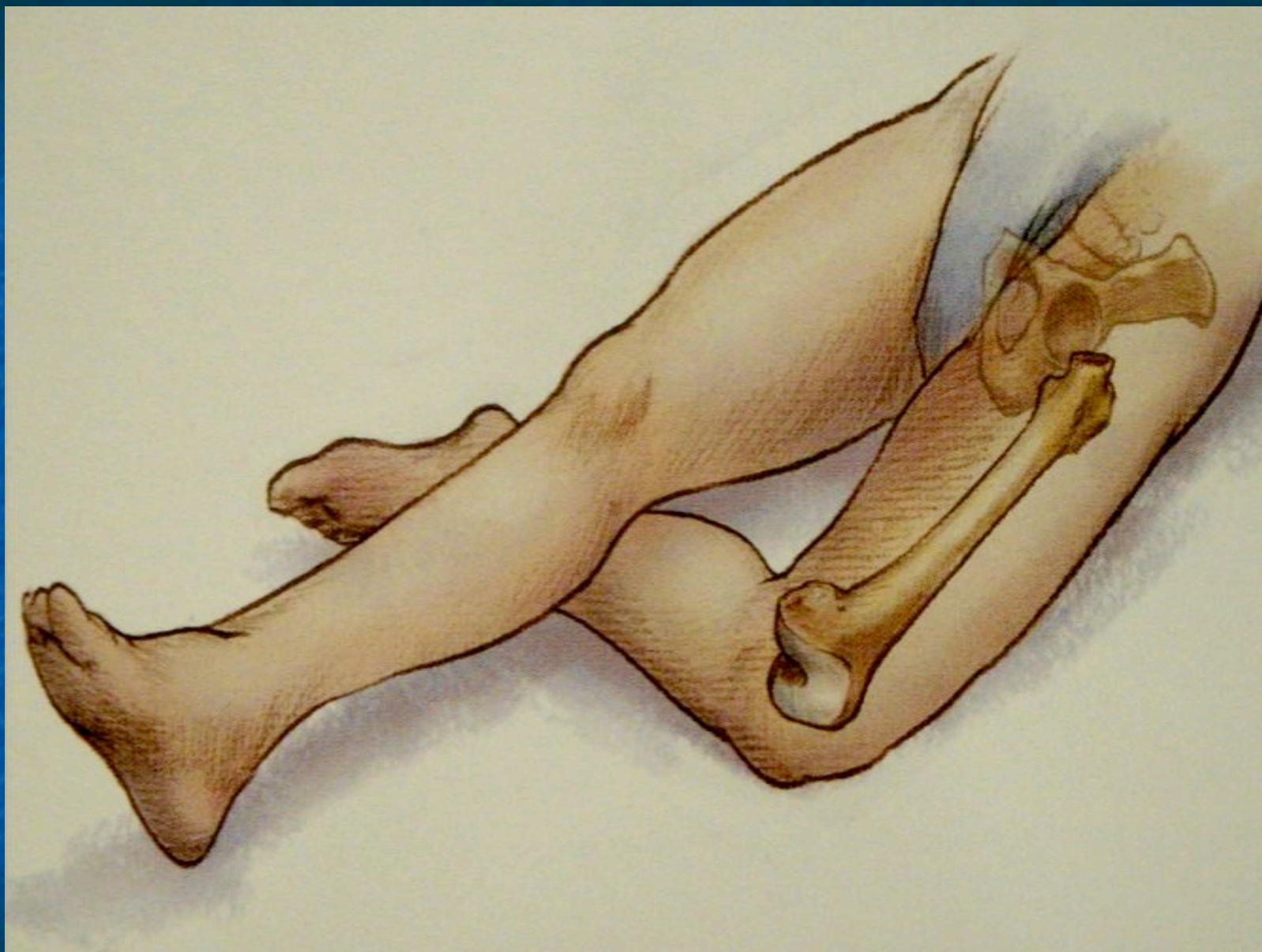


OMNI-TRACT SURGICAL FEMORAL ELEVATOR



ASI





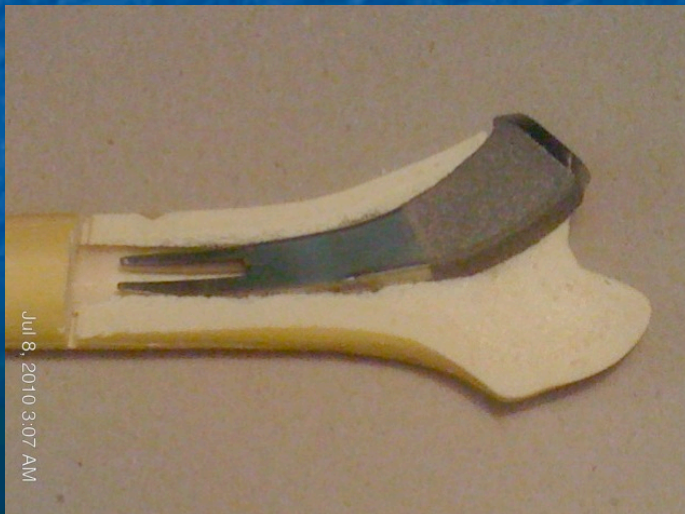
LEG LENGTHS

- MATTA/ARCH—"Direct comparison of length and offset by overlying image transparencies of right and left hip"
- "NO TABLE"—"Easy to directly compare leg lengths one against the other"

LEG LENGTHS



WHY ARC™ Stem For the ANTERIOR APPROACH?

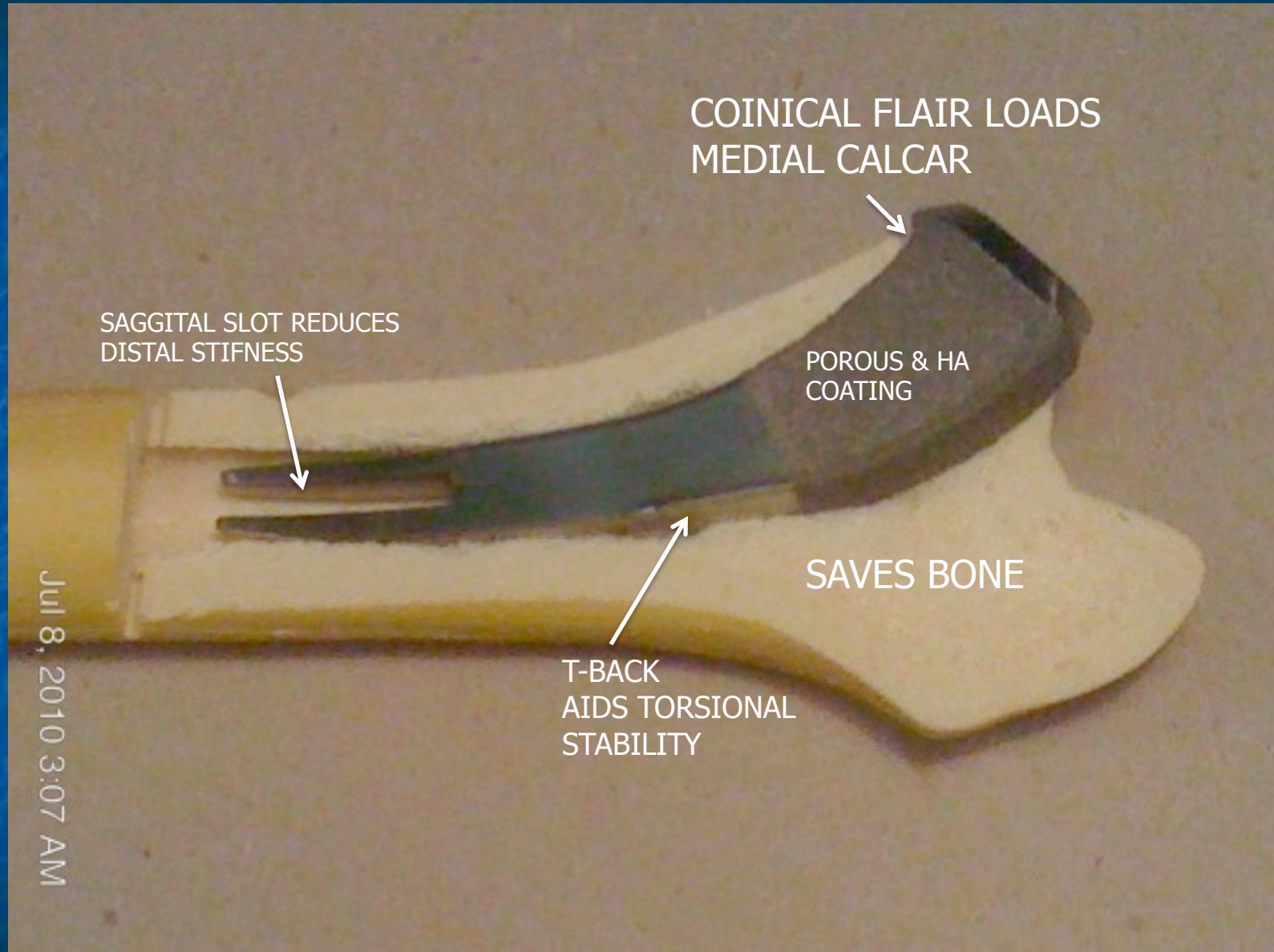


ARC ADVANTAGES

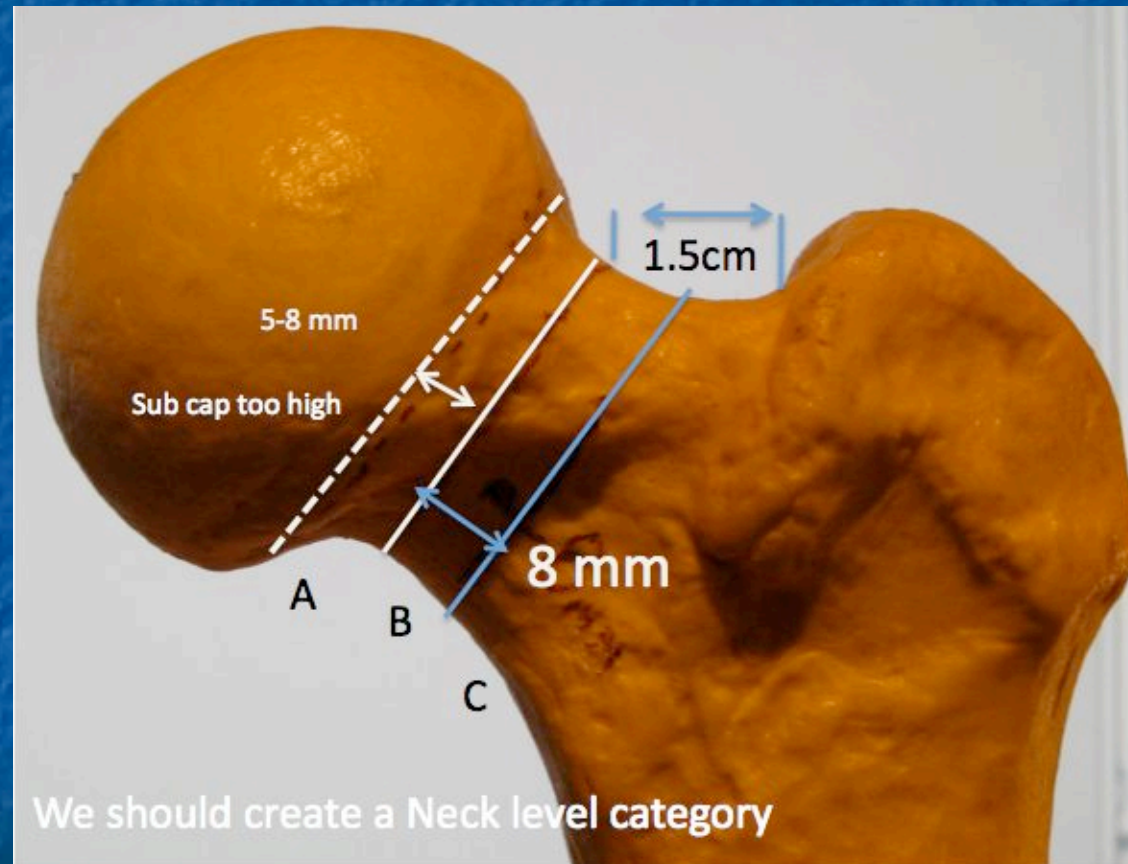
- "MADE FOR ALL APPROACHES"
- Makes THE ANTERIOR APPROACH EASIER
- SHORT STEM FOLLOWS THE MEDIAL CURVE
- CURVED STEM REDUCES THE NEED TO ELAVATE THE FEMUR AS MUCH
- BONE AND TENDON SPARING

ARC ADVANTAGES

- RELATIVELY EASY TO SIZE PROPERLY
- MODULAR NECK ALLOWS FOR FINE-TUNING JOINT MECHANICS
- STABLE
- HYDROXYAPATITE
- THIGH PAIN- POTENTIALLY ELIMANTED



RESECTION LEVEL



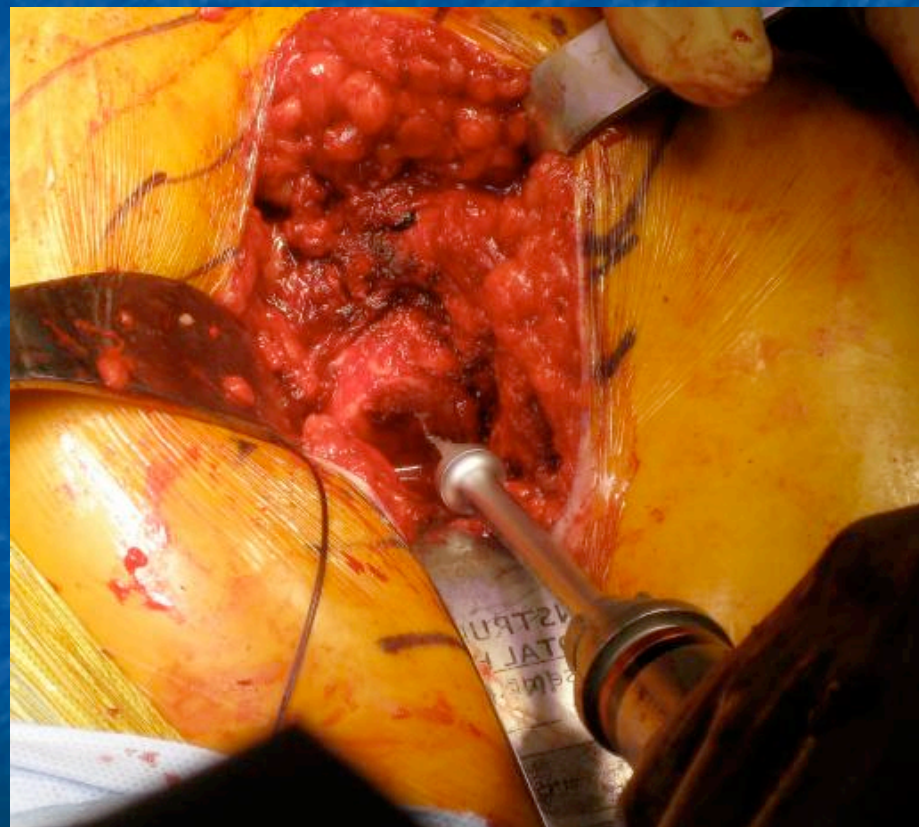
5-8 MM BELOW SUB CAP AT ABOUT 50°

ARC INSTRUMENTS

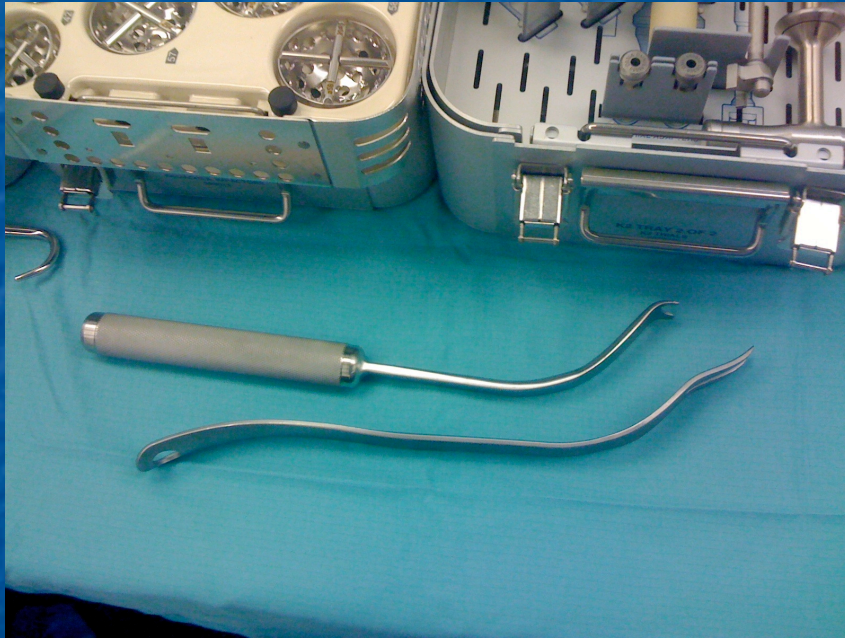
- "Ice Pick"-Starter broach
- "Rat Tail"



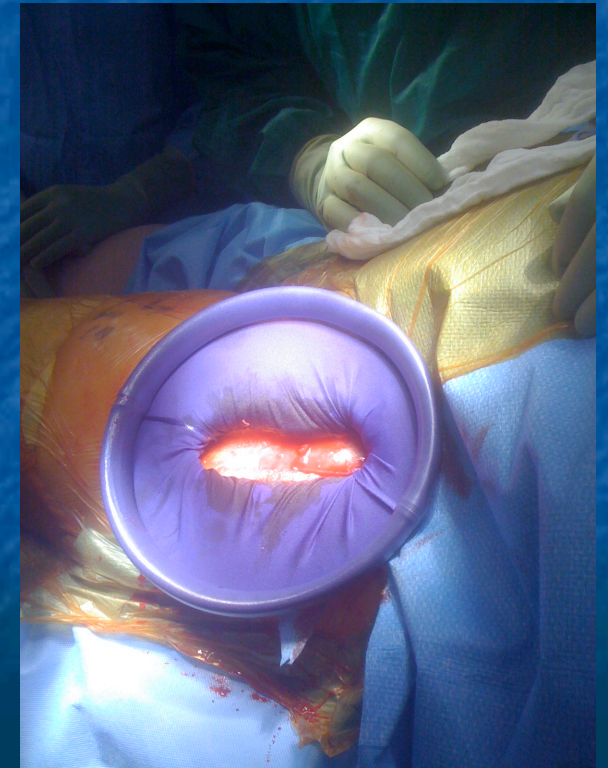
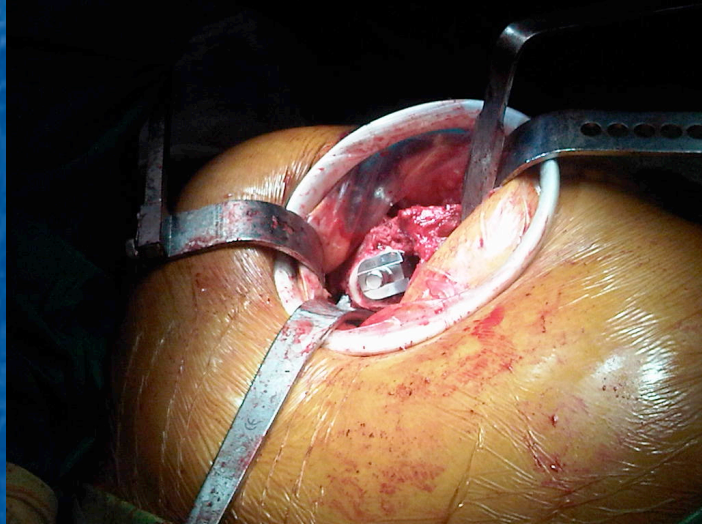
"BEN HUR"



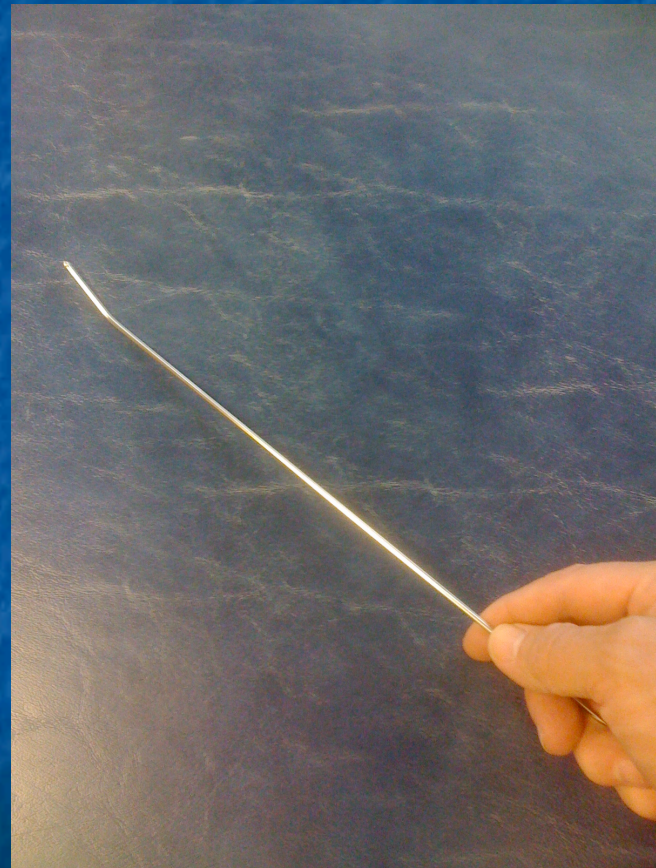
RETRACTORS



SOFT-TISSUE RETRACTOR



CANAL FINDER



MY EXPERIENCE

- 21 ARC STEMS
- 20 ANTERIOR APPROACH
- 2 MEDIAL "CRACKS"

Rasping technique should be used vs. broaching technique to reduce risk of intra-operative cracks.

- 2 "PIG TAIL" PENETRATIONS

SOME LESSONS LEARNED

- ANTERIOR APPROACH CAN BE "EASY" OR HARD, LIKE ANY OTHER
- EXPOSURE /SOFT-TISSUE RELEASE IS A KEY
- USE CAUTION WITH OSTEOPOROTIC BONE OR DIFFICULT EXPOSURE
- BE CAUTIONS WITH "ICEPICK", "BEN HUR", AND "RAT TAIL"
- MID TO LATERAL INSERTION SITE ON FEMUR

SOME LESSON LEARNED

- ANGLE / ROTATE RAT TAIL SLIGHTLY ANTERIOR
- HAN RASP WHEN POSSIBLE
- "CANAL FINDER"
- STEM MAY BE TIGHT EITHER PROXIMALLY OR DISTALLY
- FLOUROSCOPY PROVIDES SIGNIFICANT ADVANTAGE WITH ANTERIOR APPROACH

SOME LESSONS LEARNED

- ACETABULUM NOT ALWAYS "A GIVEN"
- EXPOSE WELL / EXCISE OSTEOPHYTES
- 45° ANGLED REAMER
- CAN PLACE REAMER HEAD IN ACET BY HAND IF NECESSARY

Intraoperative X-rays are helpful



Can make difficult cases easier



Becoming My Routine Hip Stem of Choice

